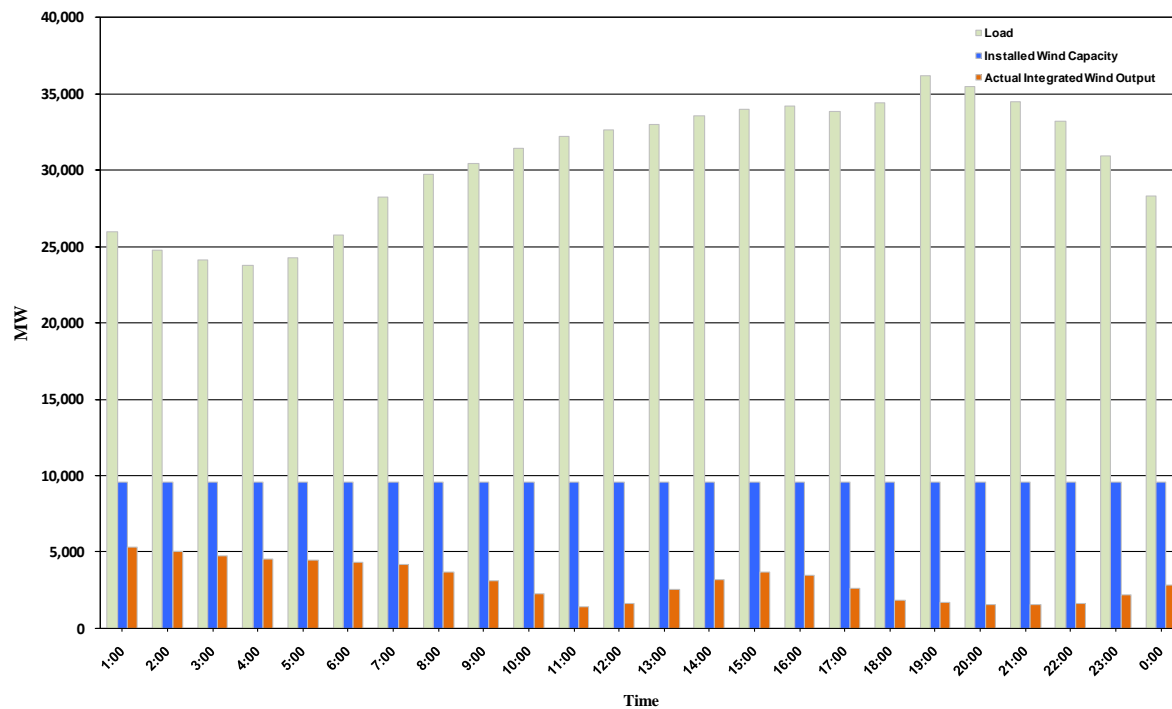




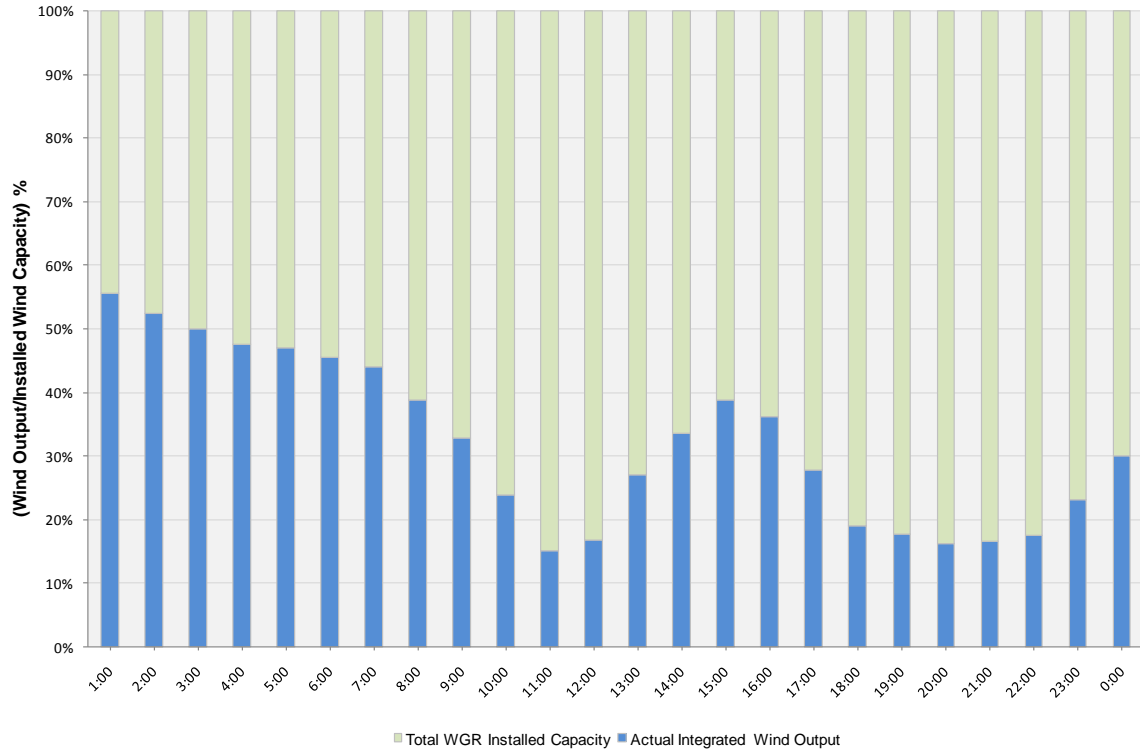
## ERCOT Grid Operations Wind Integration Report: 12/21/10

Peak Load	<b>36,151 MW</b>
Load Peak Hour	<b>19</b>
Wind Record 12/11/10	<b>7,227 MW</b>
Max Wind Value	<b>5,468 MW</b>
Wind Peak Hour	<b>00:00:02</b>
Wind Integration %	<b>20.31</b>

Hourly Average Actual Load vs. Actual Wind Output  
12-21-2010



**Actual Wind Output as a Percentage of the Total Installed Wind Capacity**  
**12-21-2010**



**Actual Wind Output as a Percentage of the ERCOT Load**  
**12-21-2010**

